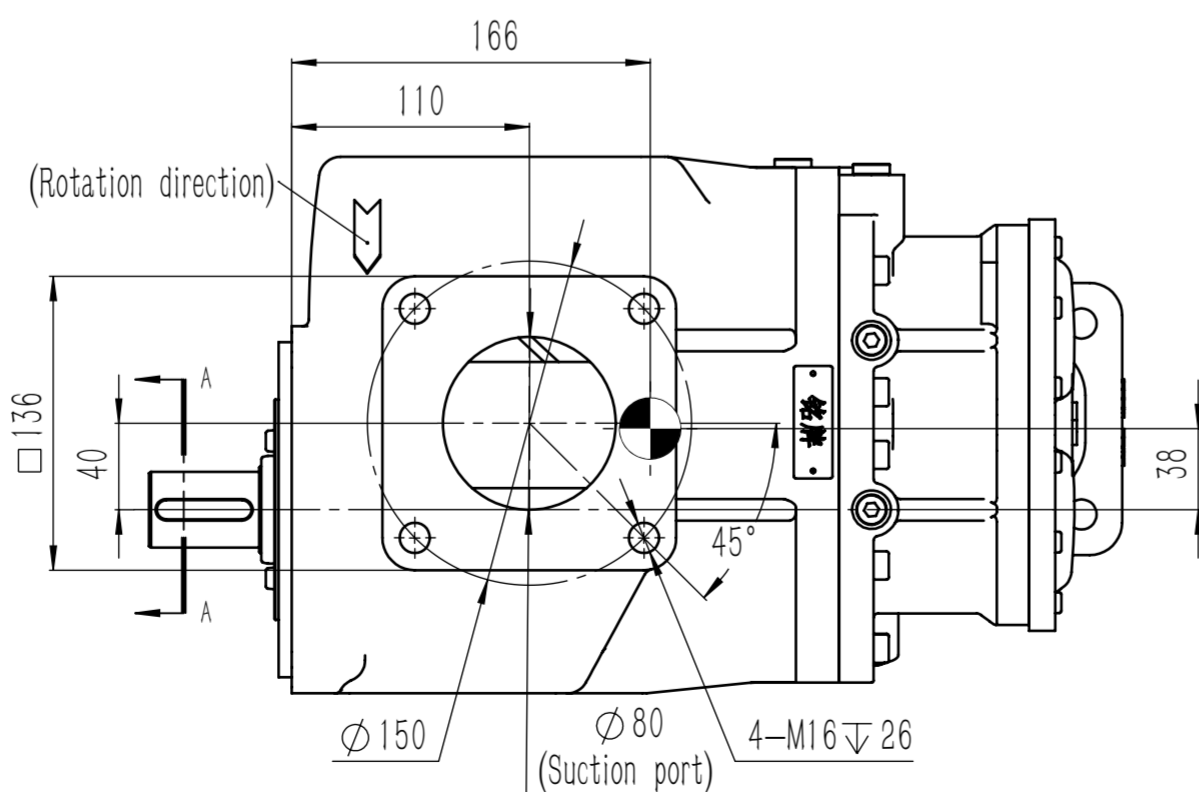
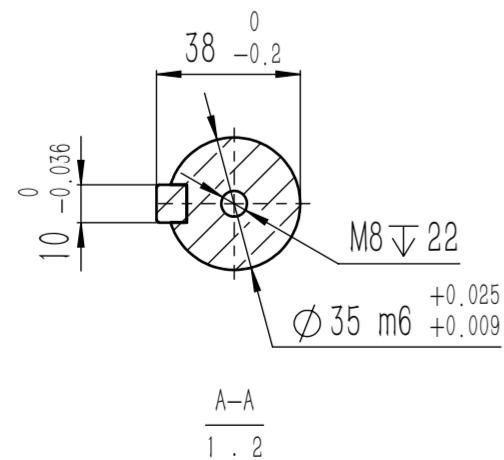
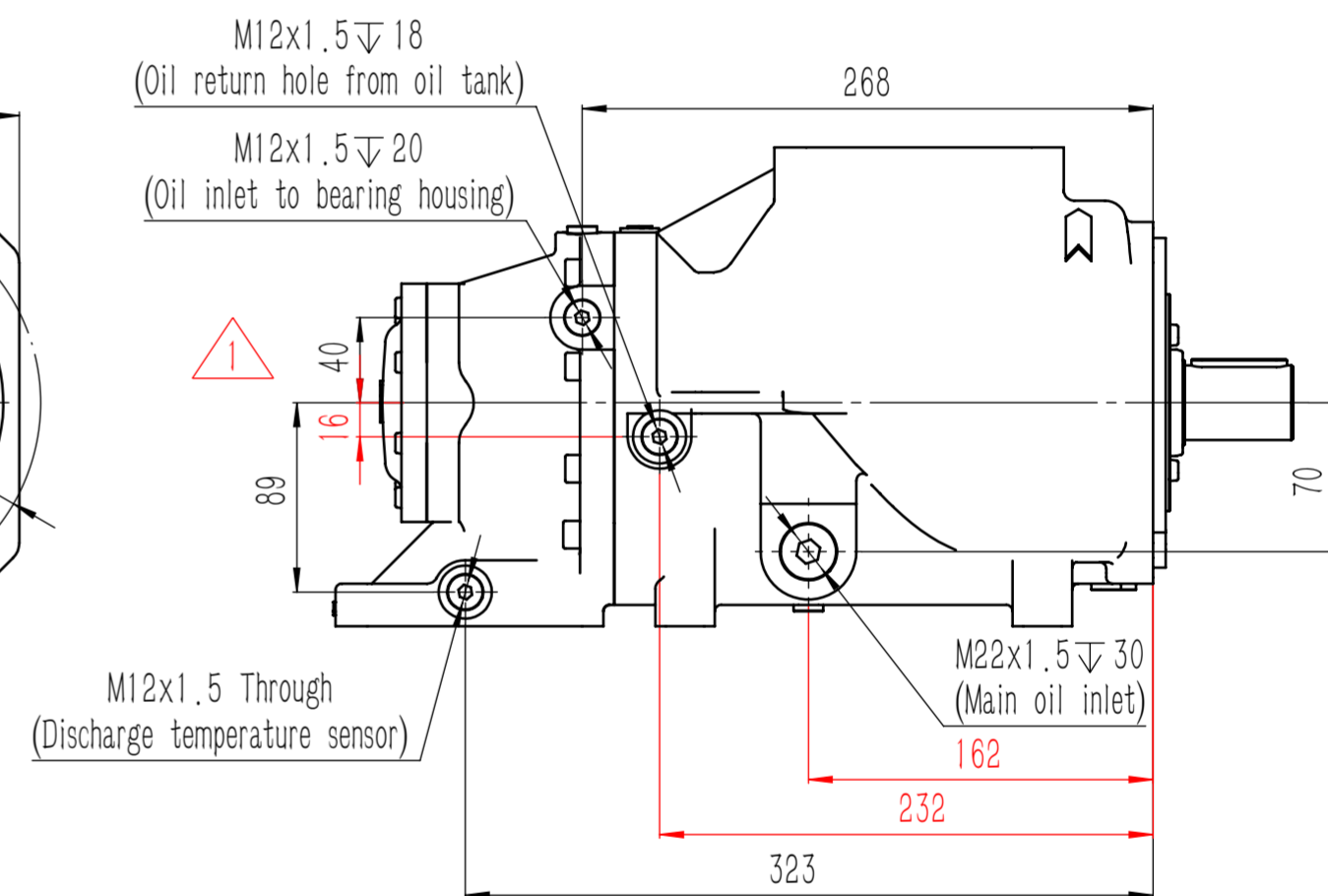
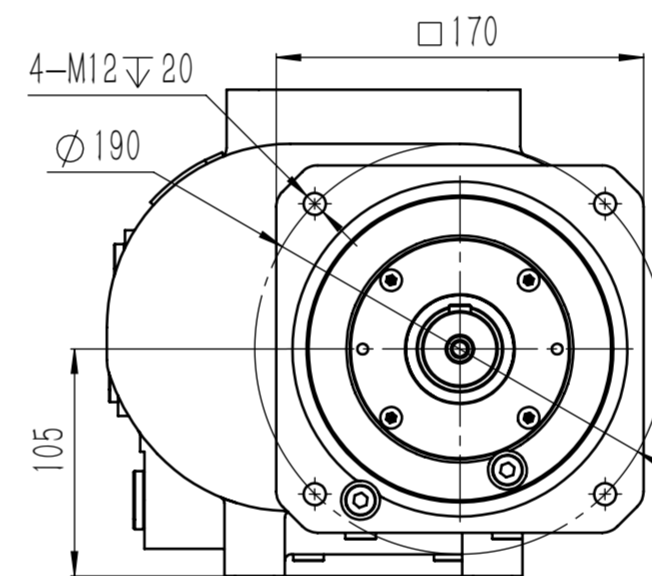
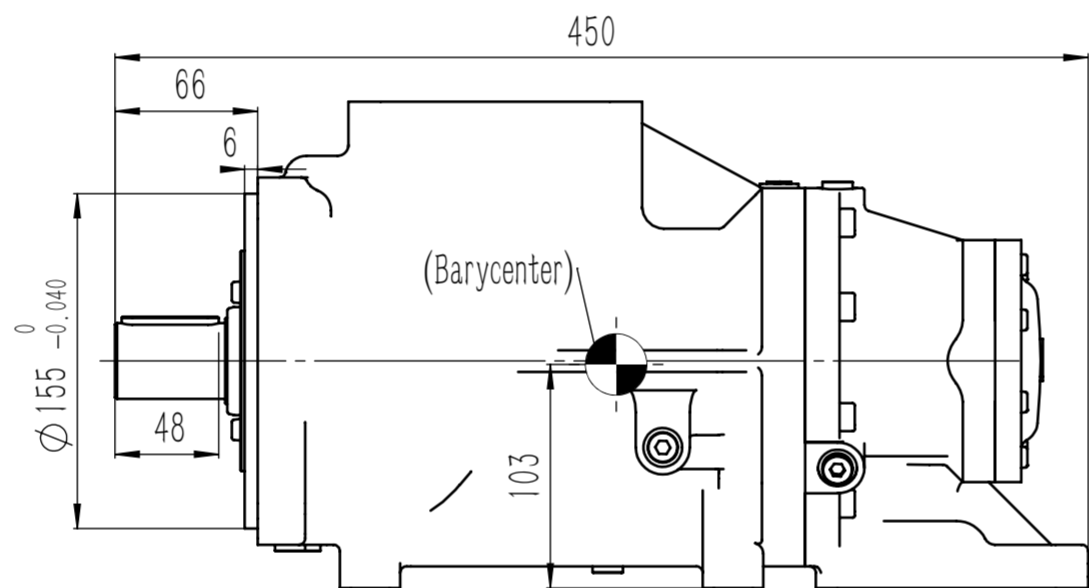
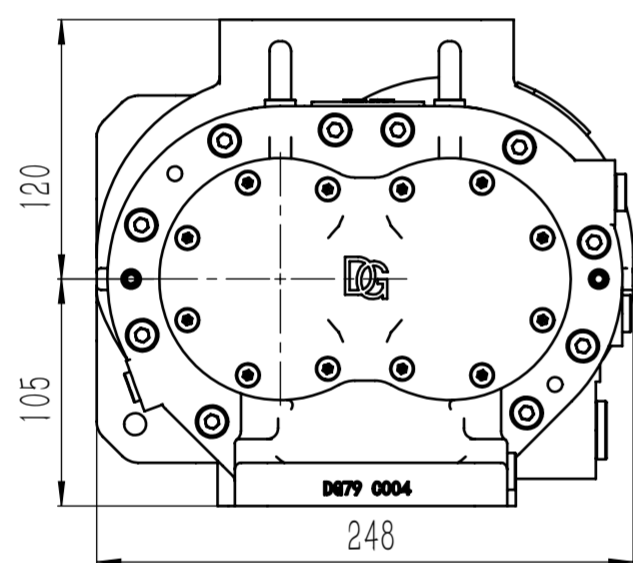
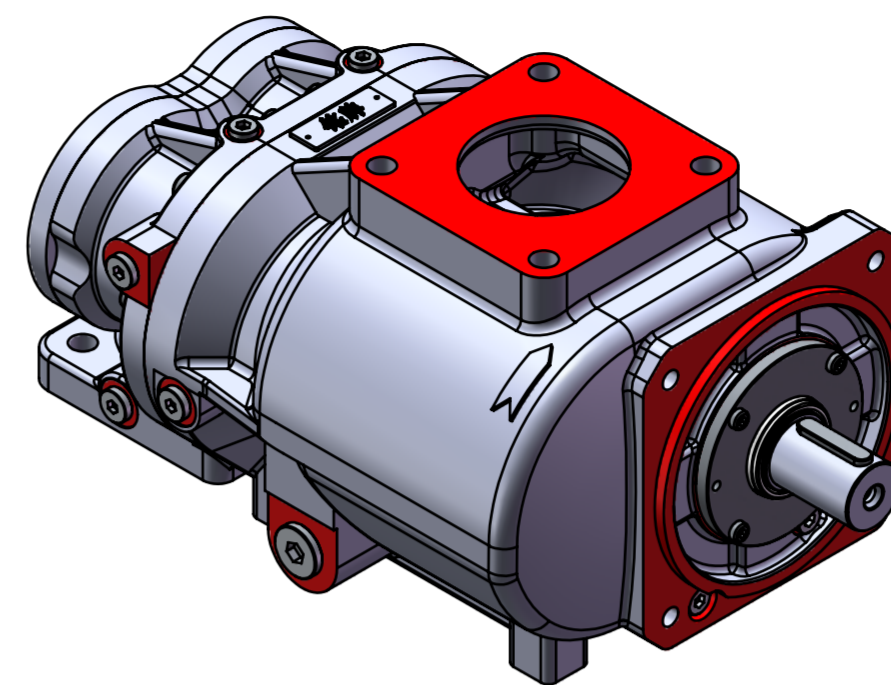
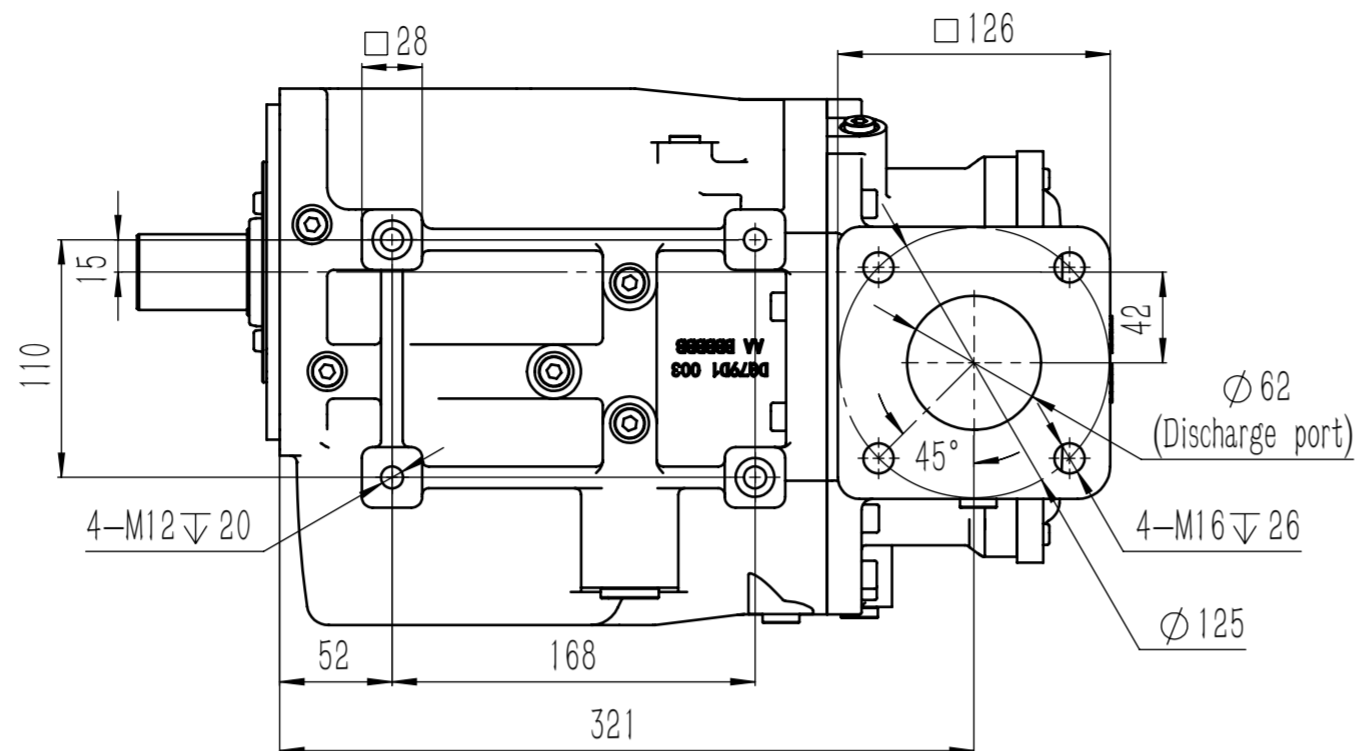
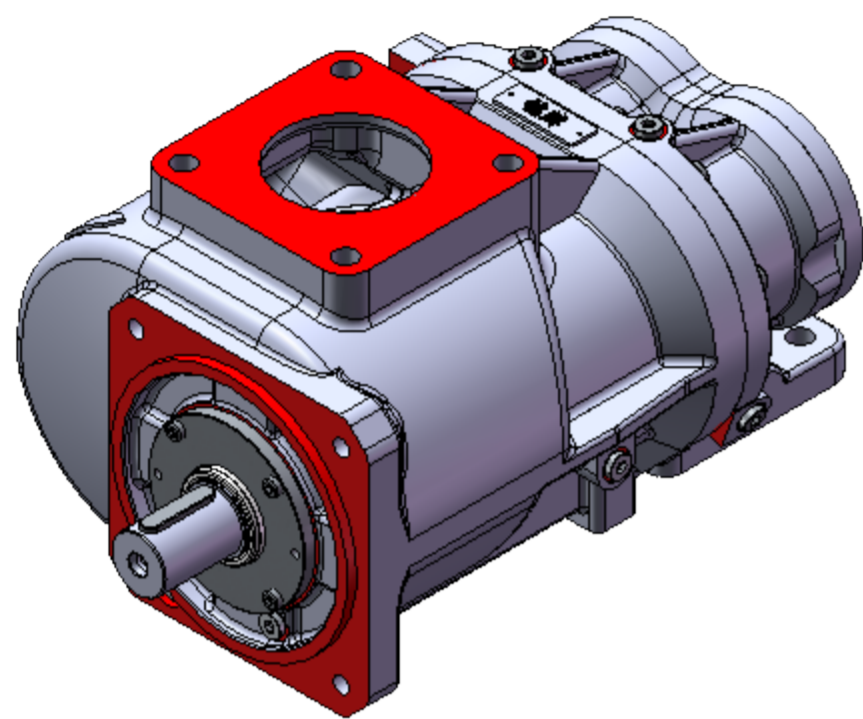


Tolerance Class	Dimension	0.5-3	3-6	6-30	>30-120	>120-400	>400-1000	>1000-2000	>2000-4000
GB/T1804-m(Medium)		±0.1	±0.1	±0.2	±0.3	±0.5	±0.8	±1.2	±2
GB/T1804-r(Rough)		±0.2	±0.3	±0.5	±0.8	±1.2	±2	±3	±4



Requirement

1. Direct driving screw compressor.
2. Shaft end tapping is strictly prohibited.
3. No reversal.
4. Fill some lubricant from suction flange before start up.
5. To avoid extra noise when unloading, compensation air should be considered.
6. The oil collecting hole is used to store a small amount of oil leakage from the oil seal at the moment of stop, which can be sucked back in the oil return hole when start up. Check valve should be installed between Oil collecting and oil return.
7. Maxima input speed 3953rpm, Maxima discharge pressure 16bar (G), Maxima Suction flow 2.2m³/min, Maxima operation temperature 118°C.

NO.	Modify content	Modifier	Date	Version Number	Process	Approve	JYT001	2019-05-09
1	Modify the main oil inlet and oil return hole from oil tank, see the red logo for details.	WG	2019.5.8	A02	Audit	JYT001	2019-05-09	

NO.	Partition	Charge NO.	Sign	Date	01.002.0055			AZT 79
Design	JYT005	2019-05-08	Standardization		Version Tag	Weight	Scale	
Revision					A02	60.213	1,3,5	
					Sheet 1	of 1		