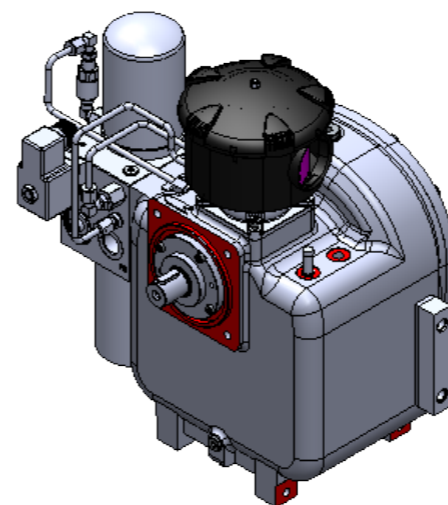
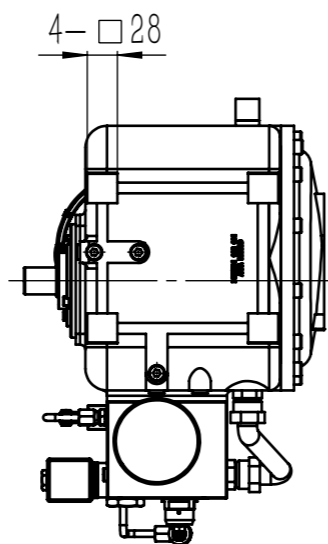
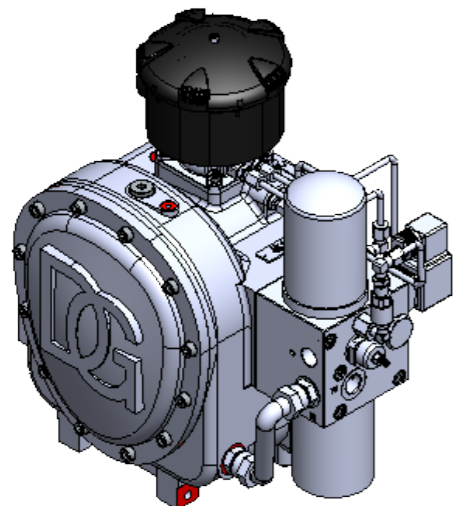
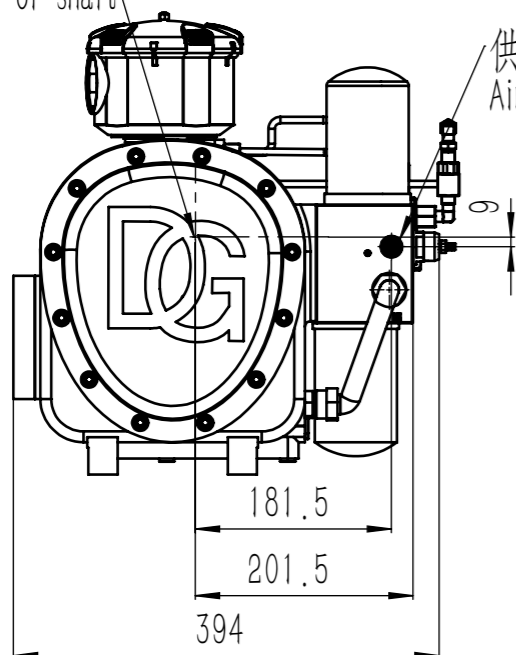


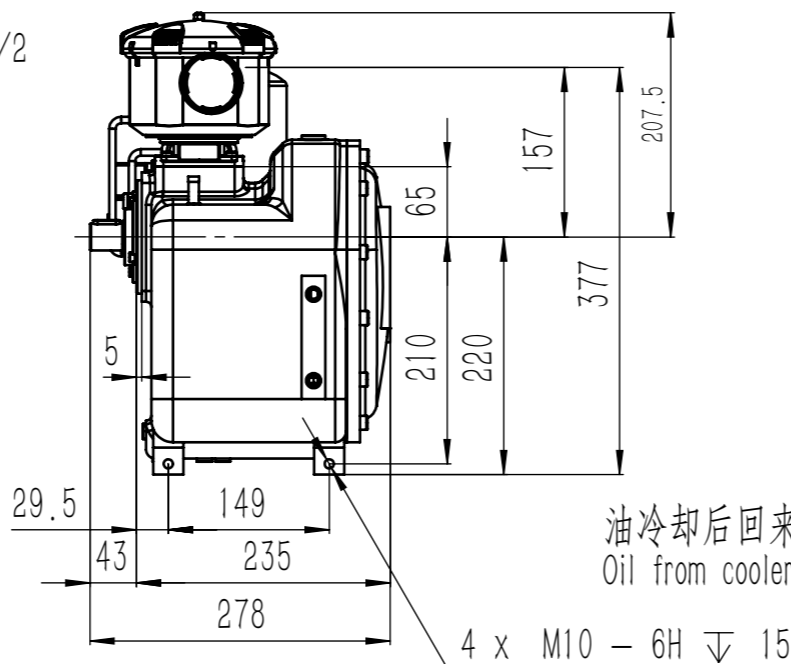
| Tolerance Grade | Dimension | 0.5-3 | >3-6 | >6-30 | >30-120 | >120-400 | >400-1000 | >1000-2000 | >2000-4000 |
|--------------------|-----------|-------|------|-------|---------|----------|-----------|------------|------------|
| GB/T1804-m(Medium) | | ±0.1 | ±0.1 | ±0.2 | ±0.3 | ±0.5 | ±0.8 | ±1.2 | ±2 |
| GB/T1804-c(Rough) | | ±0.2 | ±0.3 | ±0.5 | ±0.8 | ±1.2 | ±2 | ±3 | ±4 |



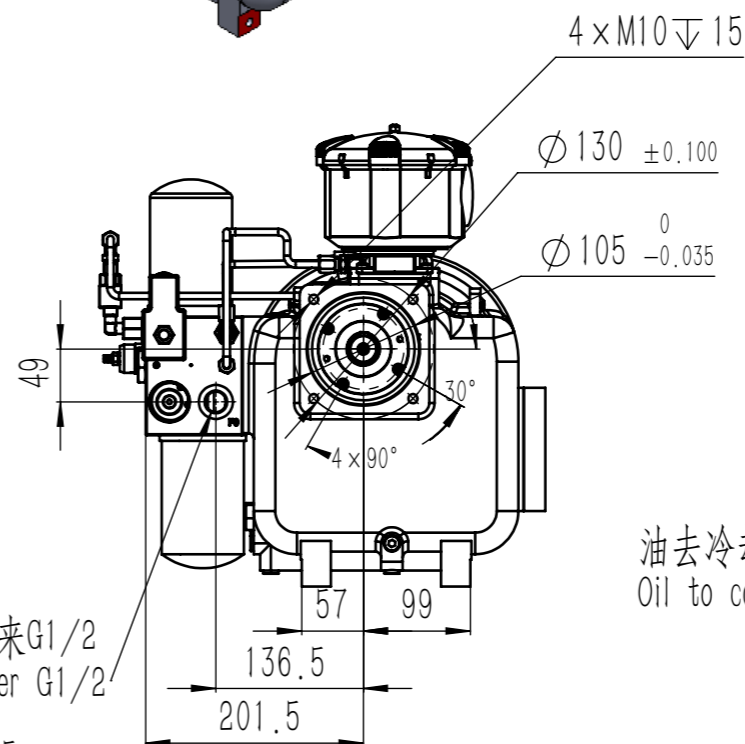
输入轴中心
center of shaft



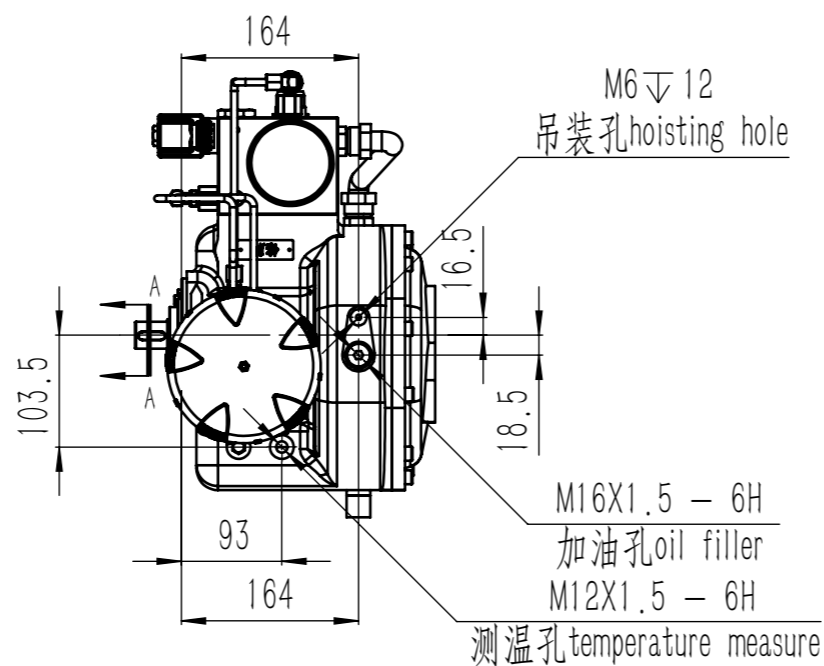
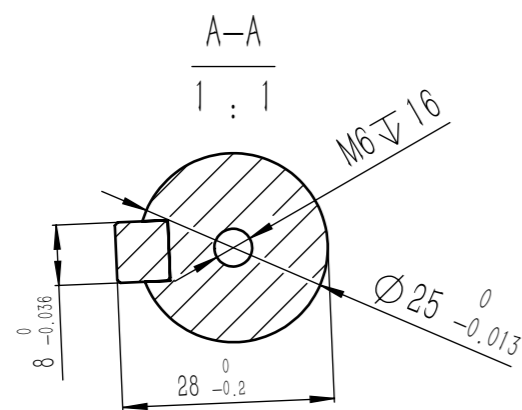
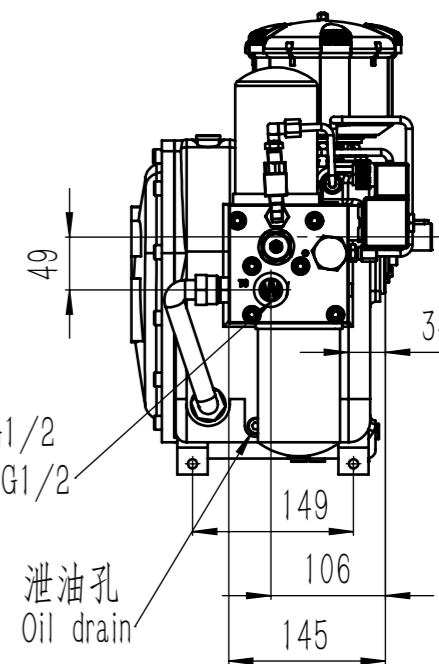
供气口G1/2
Air out



油冷却后回来G1/2
Oil from cooler G1/2



油去冷却器G1/2
Oil to cooler G1/2



技术要求:
Requirement

1. 严禁轴伸端敲击
1. Shaft end tapping is strictly prohibited
2. 最高转速6000rpm, 最高排气压力16bar, 最大排气量1m³/min, 最高运行温度118℃
2. Maxima input speed 6000rpm, Maxima discharge pressure 16bar (G),
Maxima Suction flow 1m³/min, Maxima operation temperature 118℃

| NO. | Partition | Charge NO. | Sign | Date | 01.018.0002 | | | AZT 45 |
|----------|-----------|------------|-----------------|------------|--------------|--------|-------|--------|
| Design | HYT052 | 2022-01-22 | Standardization | | Version Tag | Weight | Scale | |
| Revision | | | | | A02 | 44.26 | 1.5 | |
| Audit | HYT052 | 2022-01-22 | | | Sheet 1 of 1 | | | |
| Process | | | Approve Admin | 2022-01-22 | | | | |